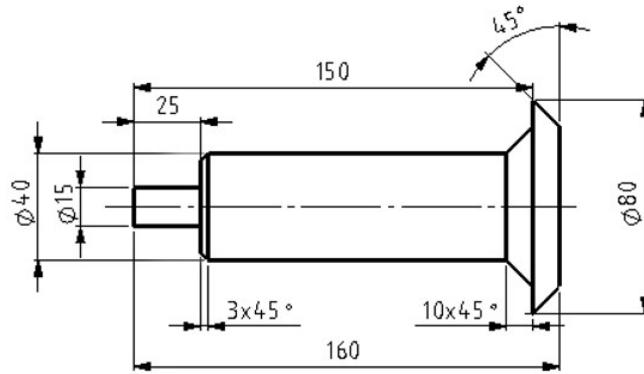
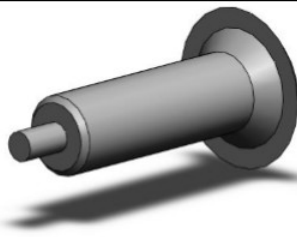


TP 7 : conception pièces complexes

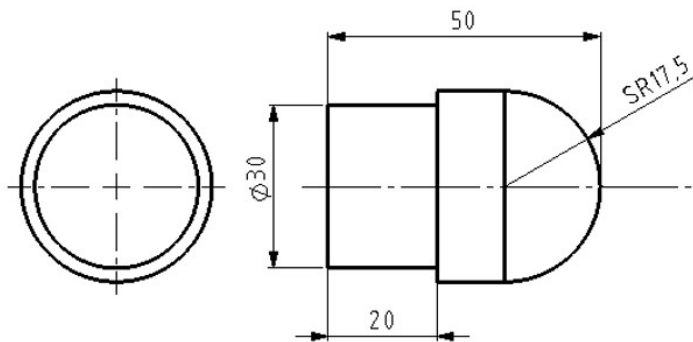
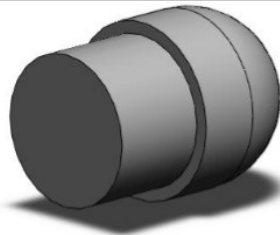
consigne : réaliser ci-dessous la conception des pièces puis les enregistrer dans votre dossier personnel.

	Tutoriel 2 - Exercices
Exercice 2-1	<p>The technical drawing illustrates a rectangular plate with three circular holes of increasing diameters. The isometric view shows a plate with a thickness of 10 mm. The side view (SECTION A-A) shows a total length of 200 mm and a thickness of 30 mm. The three holes have diameters of $\phi 15$, $\phi 30$, and $\phi 45$. The holes are positioned at 25 mm, 50 mm, and 75 mm from the left edge. The end of the plate is chamfered with a $5 \times 45^\circ$ chamfer and a $10 \times 45^\circ$ chamfer. The top view shows a rectangular plate with a width of 100 mm and a total length of 200 mm. The holes are centered vertically and positioned at 25 mm, 50 mm, and 75 mm from the left edge.</p>

Exercice 2-2

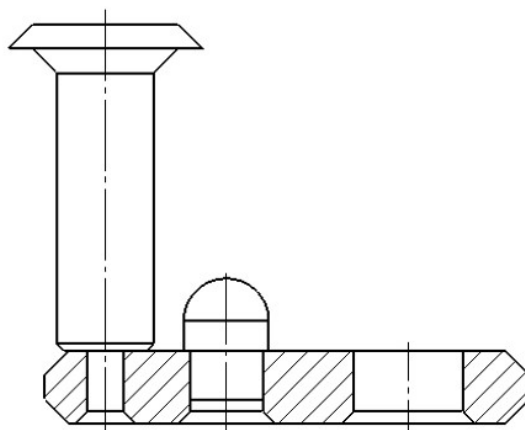
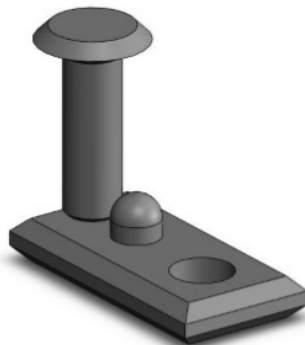


Exercice 2-3

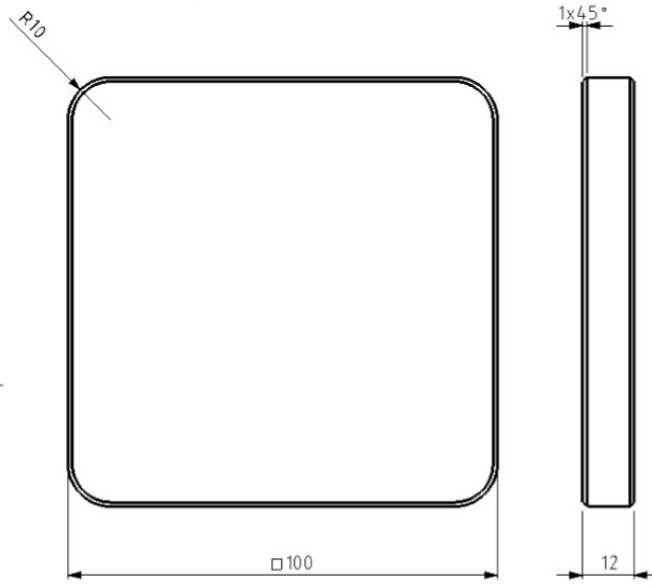


Exercice 2-4

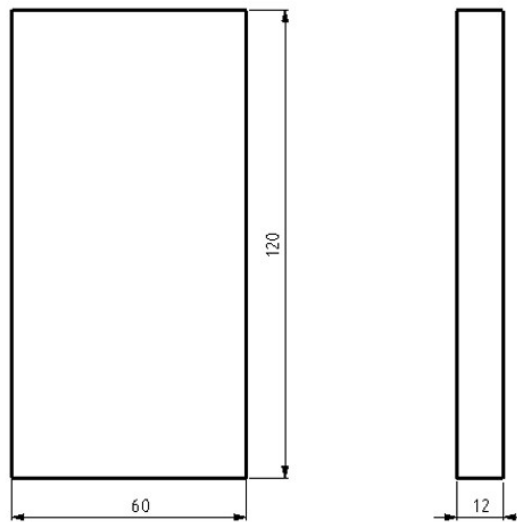
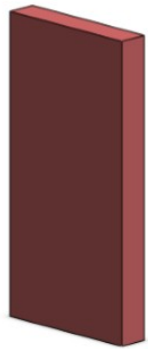
Reprenez les pièces créées lors des exercices 2-1 à 2-3 afin de réaliser l'assemblage présenté ci-contre.



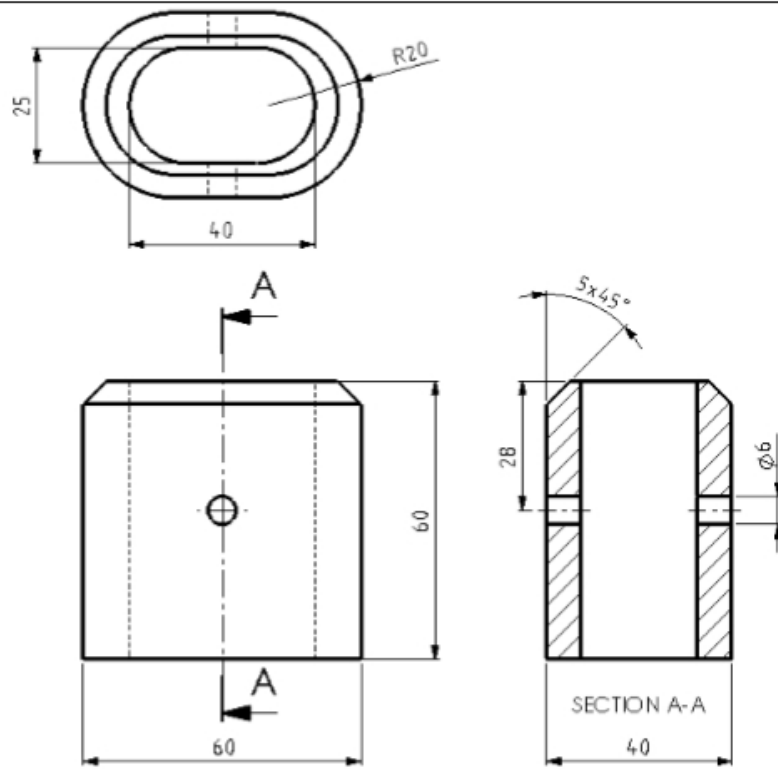
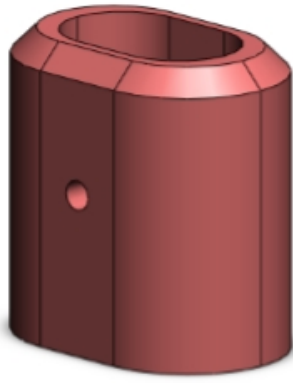
Exercise 3-6



Exercise 3-7

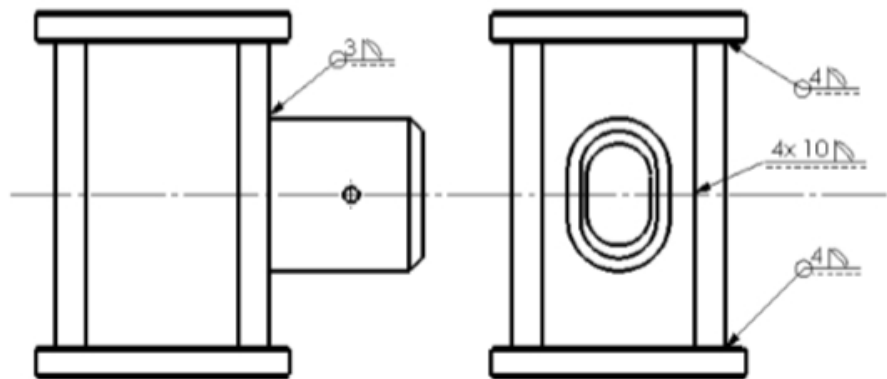


Exercice 3-8



Exercice 3-9

Reprenez les pièces créées lors des exercices 3-6 à 3-8 afin de réaliser l'assemblage. Ajoutez des soudures d'angle comme illustré ci-contre.

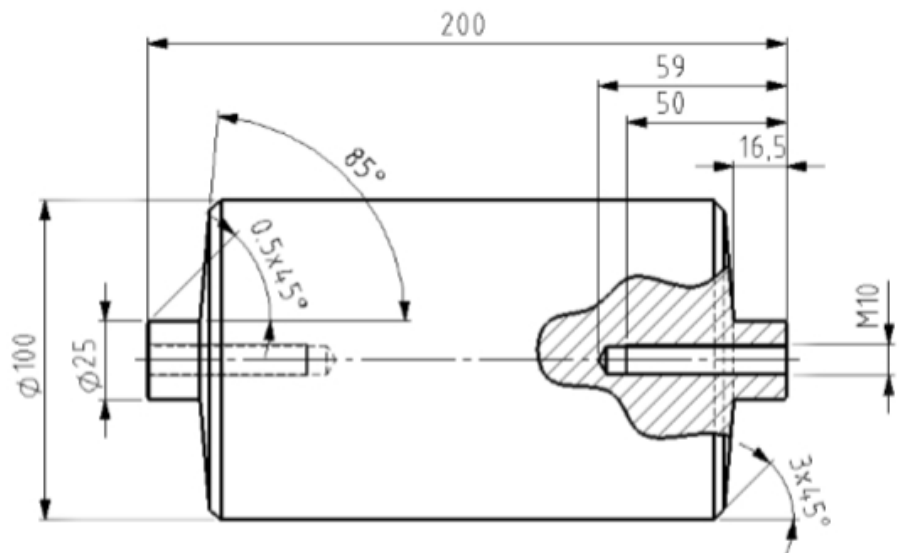


Exercice 3-10

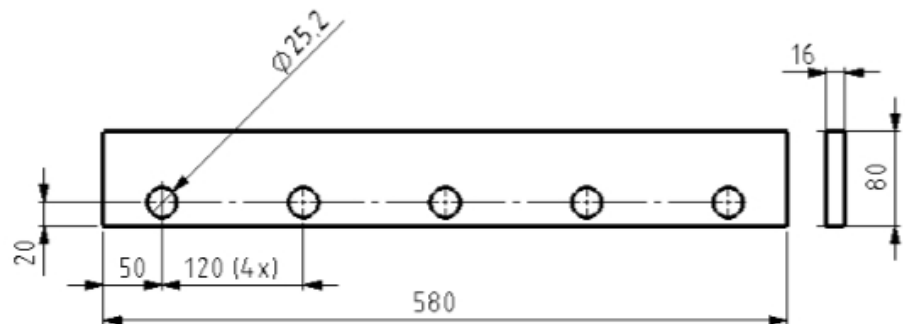
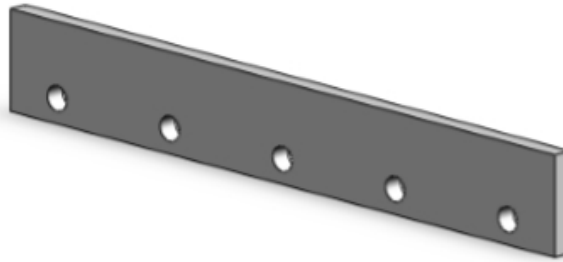
À présent, réalisez un manche de 700 mm de long et ajoutez-le à l'assemblage.



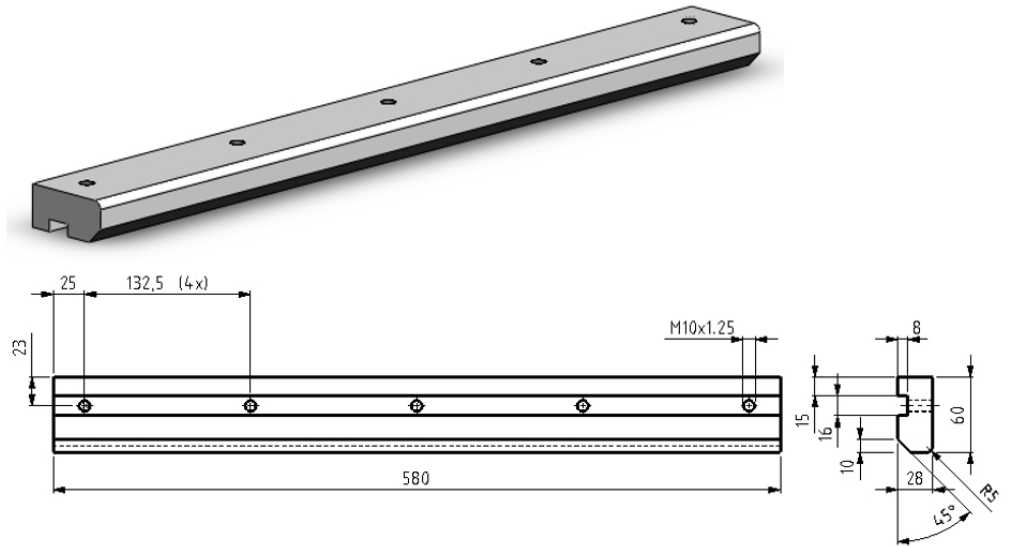
Exercice 3-11



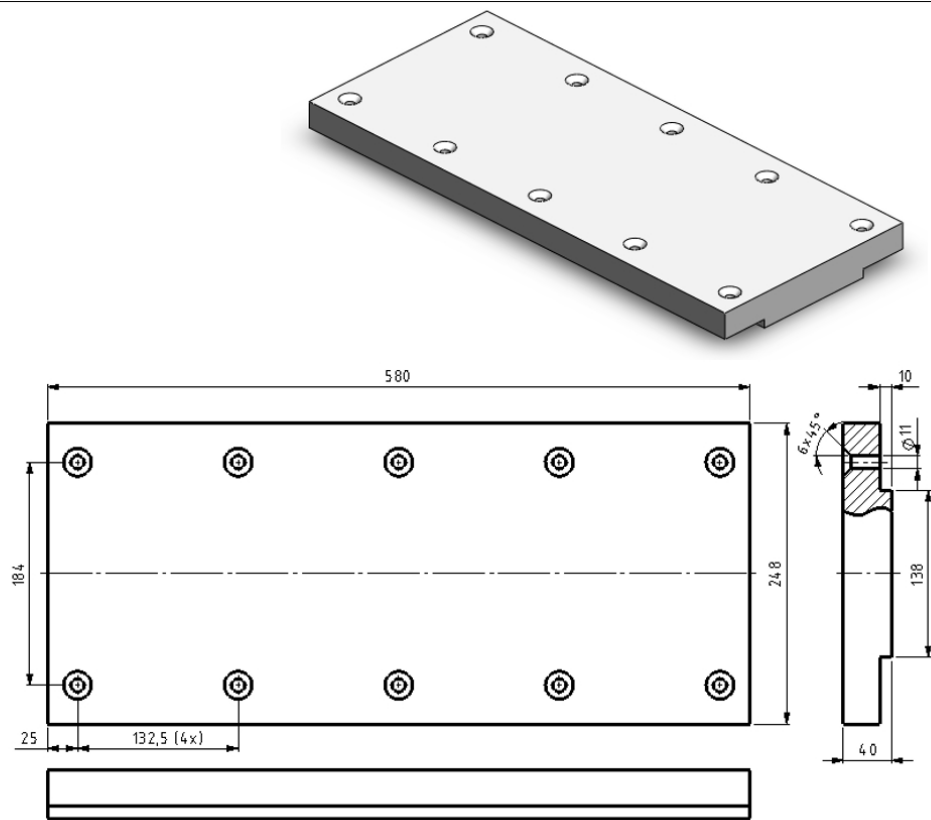
Exercice 3-12



Exercice 3-13



Exercice 3-14



Exercice 3-15

Reprenez les pièces créées lors des exercices 3-11 à 3-14 afin de réaliser l'assemblage.

Utilisez 10 vis à tête creuse fraisée à six pans (ISO 10642) M10 x 45 pour fixer les bandes 3-13 à la plaque supérieure 3-14.

Soudez la bande 3-12 sur la bande 3-13 en appliquant une soudure d'angle sur toute la longueur.

Utilisez des vis à tête hexagonale et de grandes rondelles plates pour fixer les rouleaux (3-11).

